

## Roll-in 1 Door Refrigerator, 750lt (0/+10) - Remote

ITEM # \_\_\_\_\_  
MODEL # \_\_\_\_\_  
NAME # \_\_\_\_\_  
SIS # \_\_\_\_\_  
AIA # \_\_\_\_\_



729172 (ARI075R1FR)

1-door roll-in refrigerator 750L,  
0/+10°C, AISI 304, remote

### Short Form Specification

#### Item No.

External and internal in AISI 304 stainless steel. Insulation thickness 60mm. Right hinged full door with lock. Bottom door gasket adjustable. Pre-arranged for remote refrigeration unit (non included); ventilated operating mode; digital control; evaporator; automatic defrost; external digital temperature display; high/low humidity switch. Operating temperature 0/+10°C. For ambient temperatures up to 43° C. CFC and HCFC free. R134a gas in refrigeration circuit. Gas in foam: Cyclopentane.

### Main Features

- Certified safety CE requirements.
- Excellent space optimisation thanks to the compact dimensions (footprint 0.56m²).
- Adjustable temperature range from -2 °C to +10 °C to suit meat, fish and dairy storage requirements.
- One full door.
- The operating temperature can be adjusted from 0 to +10 °C to suit both meat and dairy storage requirements.
- Large digital white-digit display with humidity selection button (3 preset level), internal temperature display and setting, manual activation of defrost cycle and turbo frost cycle (to rapidly cool warm loads).
- Simple control panel: on/off switch, high/low humidity switch and digital temperature display.
- Equipped with Optiflow forced air circulation system for rapid cooling and temperature distribution within the cell.
- Automatic defrost and automatic evaporation of defrost water.
- Tropicalized unit (43°C ambient temperature).
- Ventilated cooling for optimal temperature distribution.
- Fitted with 90 mm thickness of cyclopentane insulation for best insulating performance (thermal conductivity: 0,020 W/m\*K) and lowest environmental impact (GWP=3).
- 0mm clearance installation space: tower configuration cooling unit guarantee performance with frontal ventilation only; this unique solution allows installation against the wall or side by side with other appliances, even on the cooling unit side to maximize the use of kitchen space.
- Inner side protectors to protect the internal walls.
- Suitable for all kinds of 18 shelves GN 1/1 trolleys, designed to fit the 18 shelves GN 2/1 trolley available as optional accessory.
- Frost Watch Control starts automatically the defrosting process only when needed and ends once ice is melted, improving energy efficiency results.
- Adjustable bottom door gasket.
- Combination of doors and drawers to suit any configuration needed, with the possibility to change the configuration on site. Right cooling unit available on request.
- Lift-up control panel to better access main components.
- Fully compliant HACCP digital control: when temperature exceeds critical limits, acoustic and visual alarms are activated. Up to two months of event are kept in memory.
- Anti-tilt runners accept GN 1/1 containers.
- Self closing stainless steel doors (< 90°).
- Prearranged to fit RS485 port to facilitate connection to a remote computer and integrated HACCP systems.


APPROVAL: \_\_\_\_\_

- Connectivity ready for real time access to connected appliances from remote and data monitoring (requires optional accessory).

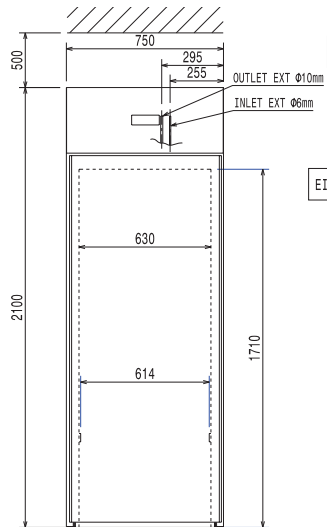
### Construction

- Interior base with rounded corners, pressed from a single sheet.
- Ease of cleaning and high hygiene standards thanks to the rounded internal corners, the easily removable runners, grids and air conveyors.
- Internal structure with 15 charging positions (3 cm pitch) available to host GN 1/1 grids, ensuring higher net capacity and a greater storage space.
- Remote compressor to suit operating conditions.
- Interior cell and external panel are constructed in 304 AISI stainless steel.
- Bottom panel with rounded internal corners avoids dirt traps.
- Refrigerant type: R134a.
- Removable triple-chamber balloon magnetic gasket to improve insulation and reduce energy consumption and ease of cleaning.
- Internal structure with numerous charging positions available to host grids, ensuring higher net capacity and a greater storage space.
- Internal and external doors, front and side panels and removable worktop in AISI 304 Stainless steel.
- External bottom panel in stainless steel.
- External back panel in galvanized steel.
- Developed and produced in ISO 9001 and ISO 14001 certified factory.
- Fault code display.
- Cabinet fitted with up to 60 mm thickness of Cyclopentane insulation for best insulating performance (thermal conductivity: 0,020 W/m²K). CFC and HCFC-free insulation.

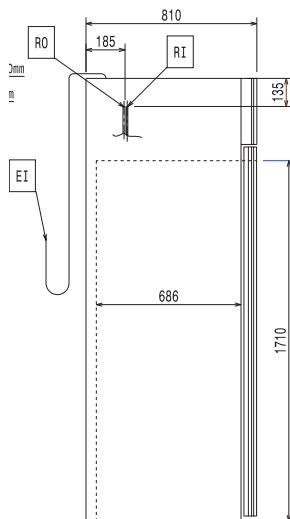
### Optional Accessories

- Trolley for 18x2/1GN roll-in 750L PNC 881521 

**Front**

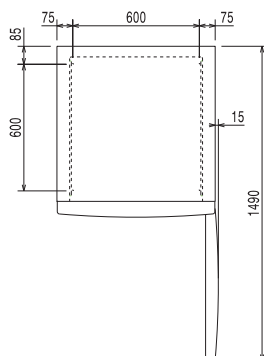


**Side**



**EI** = Electrical inlet (power)  
**RI** = Refrigerant Inlet  
**RO** = Refrigerant Outlet

**Top**



### Electric

Supply voltage:	230 V/1 ph/50 Hz
729172 (ARI075R1FR)	
Electrical power max.:	0.14 kW
Defrost Power:	0.45 kW
Current consumption:	0.8 Amps
Plug type:	CE-SCHUKO
Energy consumption (min,default):	0 - 0 kW/h

### Key Information:

Gross capacity:	750 lt
Net Volume:	615 lt
Door hinges:	Right Side
External dimensions, Width:	750 mm
External dimensions, Depth:	810 mm
External dimensions, Height:	2100 mm
Number and type of doors:	1 Full
Internal Dimensions, Width:	614 mm
Internal Dimensions, Depth:	695 mm
Internal Dimensions, Height:	1675 mm
Net weight:	131 kg
Shipping volume:	1.55 m³
Height adjustment:	0/0 mm
Number and type of grids (included):	- GN 2/1

### Refrigeration Data

Control type:	Digital
Compressor power:	
GWP Index:	1430
Refrigeration power:	0 W
Refrigeration power at evaporation temperature:	-10 °C
Refrigerant weight:	0 g
Min/Max internal humidity:	70/80
Operating temperature min.:	0 °C
Operating temperature max.:	10 °C
Refrigeration type:	R134a;R513A;R426A
Operating mode:	Ventilated
Suggested refrigeration power:	580 W
Condition at evaporation temperature:	-10 °C
Condition at condensation temperature:	55 °C
Condition at ambient temperature:	43 °C
Connection pipes (remote) - outlet:	10 mm
Connection pipes (remote) - inlet:	6 mm

### Product Information (EU Regulation 2015/1094)

Roll-in  
1 Door Refrigerator, 750lt (0/+10) - Remote

The company reserves the right to make modifications to the products without prior notice. All information correct at time of printing.

2022.07.28

# ALPENINOX

## **Roll-in 1 Door Refrigerator, 750lt (0/+10) - Remote**

**Energy Class:**

**Yearly and daily energy consumption:**

**Climate class:**

**Energy Efficiency Index (EEI):**



**Roll-in  
1 Door Refrigerator, 750lt (0/+10) - Remote**

The company reserves the right to make modifications to the products without prior notice. All information correct at time of printing.

2022.07.28